



# Visec Online Software Manual

## Camera recording – License Plate -Cloud Compatible

---

### Contents

Quick Setup .....	3
Control Panel.....	4
Language.....	4
General .....	4
Update .....	4
Users.....	5
Add Camera .....	6
Adding camera types:.....	7
• Import cameras from a previous version of Visec.....	7
• Adding Network/IP cameras .....	7
• Adding a Video Playback file as camera.....	7
• Adding a Manual Camera URL.....	7
• Adding a Test Video camera.....	7
Editing Existing Cameras.....	8
• Camera Properties.....	9
• General Camera properties.....	10
• Editing the Camera Source.....	11
• Editing the Camera Motion Settings.....	11
• Customize Motion Settings .....	12
Motion Detection Events -like Sending Email when motion detected.....	13
Customize Camera Recording Settings - .....	14
License Plate Recognition Settings LPR - .....	14
• Manage LPR settings -.....	15
• Managing LPR Database.....	15
QR code Settings - .....	16
Storage.....	17
Fixing Data Corruption.....	17



# Visec Online Software Manual

## Camera recording – License Plate -Cloud Compatible

---

DirectX test .....	18
Setting Up outgoing Email .....	18
How to Playback Video Footage.....	19
Technical Support.....	19



# Visec Online Software Manual

## Camera recording – License Plate -Cloud Compatible

### Quick Setup

- **After installing Visec**, open from the start menu under: Visec Online  
Or click the Icon:



Main Software Interface has 6 buttons on the top

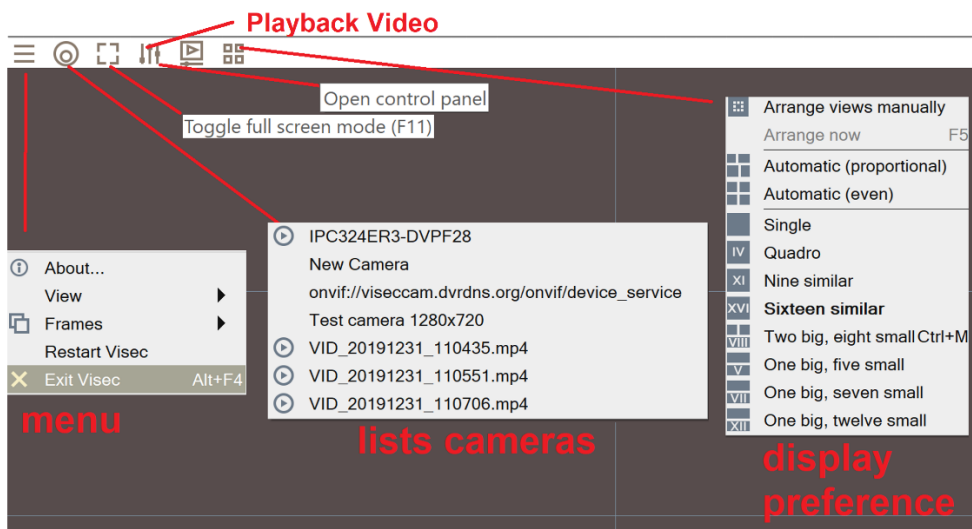
### Main Menu

List of cameras

Full Screen mode

Control Panel

Arrange Cameras using a display preference.

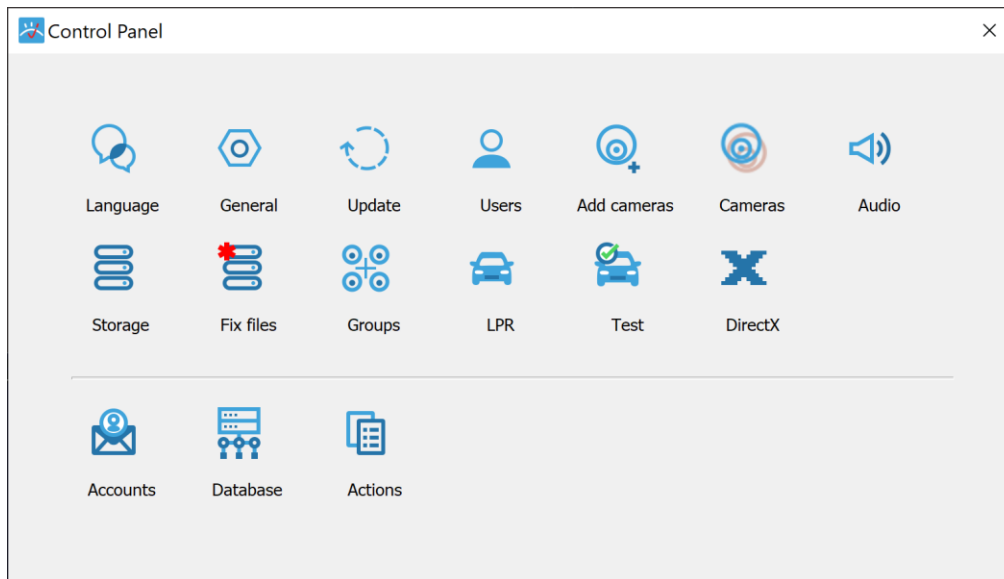




# Visec Online Software Manual

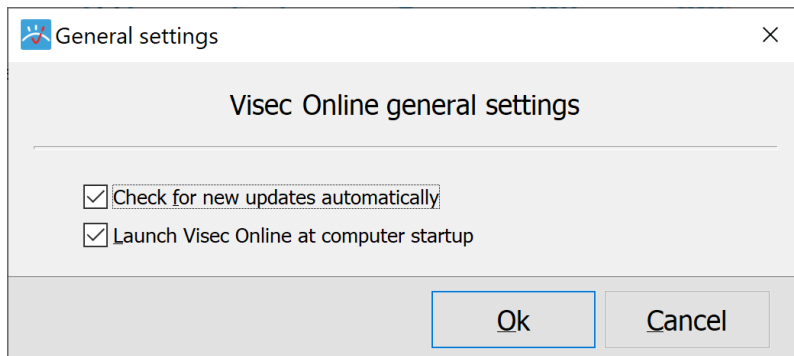
## Camera recording – License Plate -Cloud Compatible

### Control Panel



**Language**- Currently we support English and Russian.

**General**- Allows to auto check for updates and launch Visec when the computer starts up

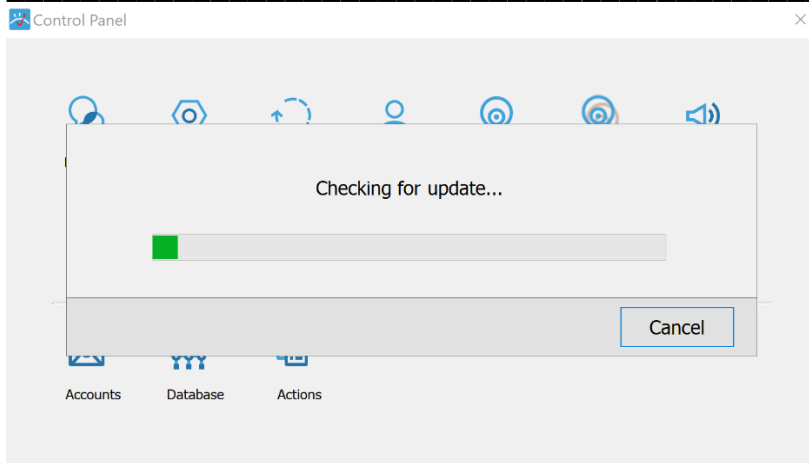


**Update** - This will check online for updates.

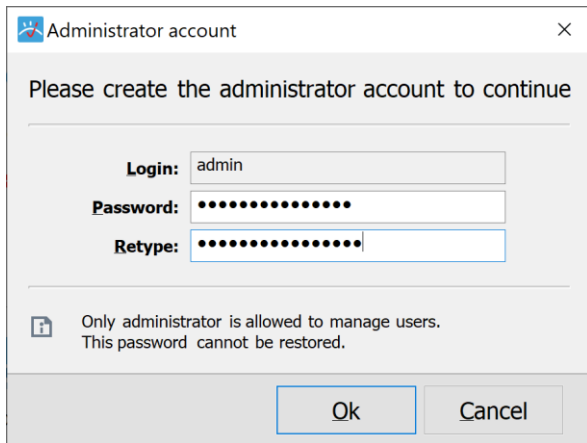


# Visec Online Software Manual

## Camera recording – License Plate -Cloud Compatible



**Users** - this will allow you to add, edit or delete users and configure user access. Looks as this below:

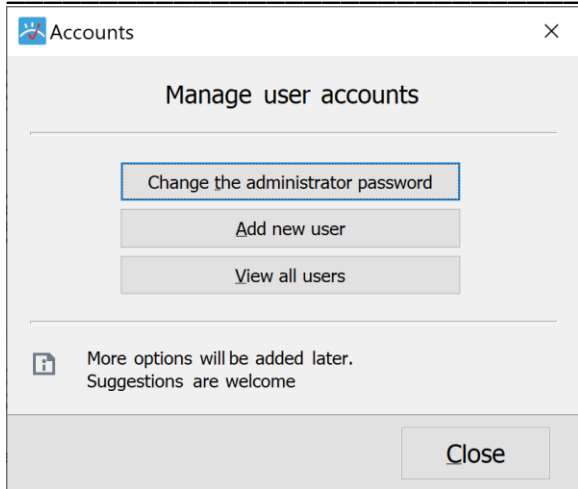


### Manage users

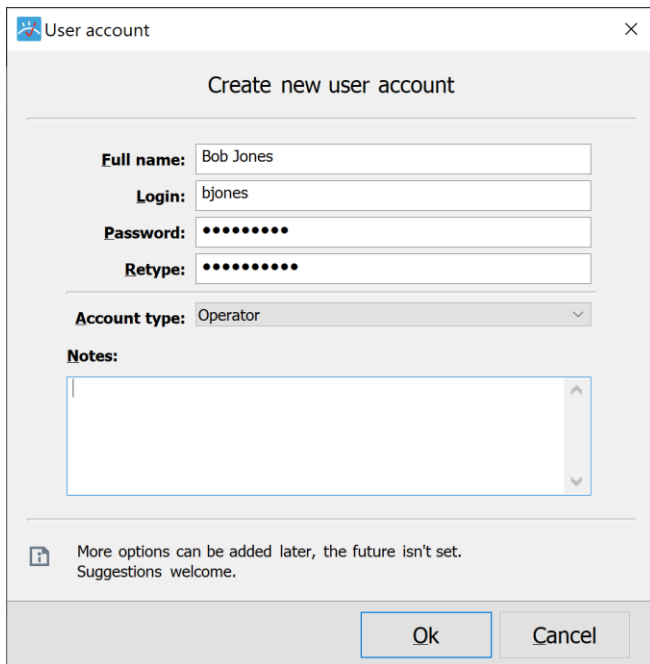


# Visec Online Software Manual

## Camera recording – License Plate -Cloud Compatible



### Create New Users

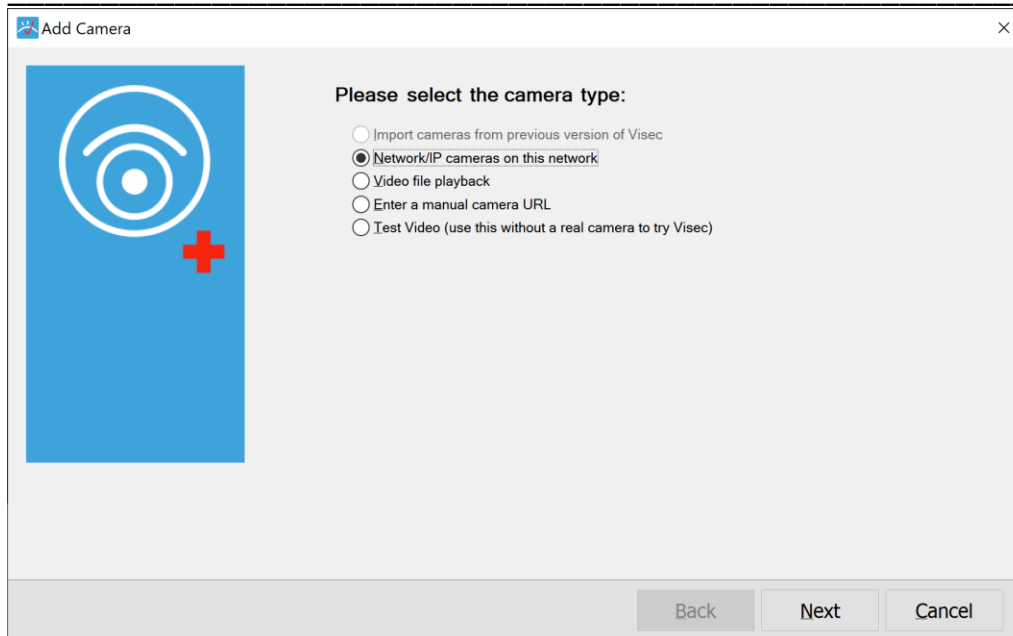


### Add Camera – this allows you to add a camera



# Visec Online Software Manual

## Camera recording – License Plate -Cloud Compatible



### Adding camera types:

- **Import cameras from a previous version of Visec**- If you run an older version of Visec, you can chose to import prior installed cameras.
- **Adding Network/IP cameras**- you can press this button to scan the network for IP cameras. We scan for ONVIF complaint cameras.
- **Adding a Video Playback file as camera**- You can add a video clip in the mp4 format. Just chose this option and then browse to the location of the .mp4 file.
- **Adding a Manual Camera URL**- here you can enter a RTSP, MJPEG or raw path to a cameras video stream. The string should be to the media stream, not just the camera ip for example:
  - `rtsp://10.1.1.22:8554/CH001.sdp`
  - `rtsp://admin:password@192.168.1.2:554/Streaming/Channels/101`
- **Adding a Test Video camera** - This is test camera, where Visec will output random video elements so you can test the software and features of the software without needed a real



# Visec Online Software Manual

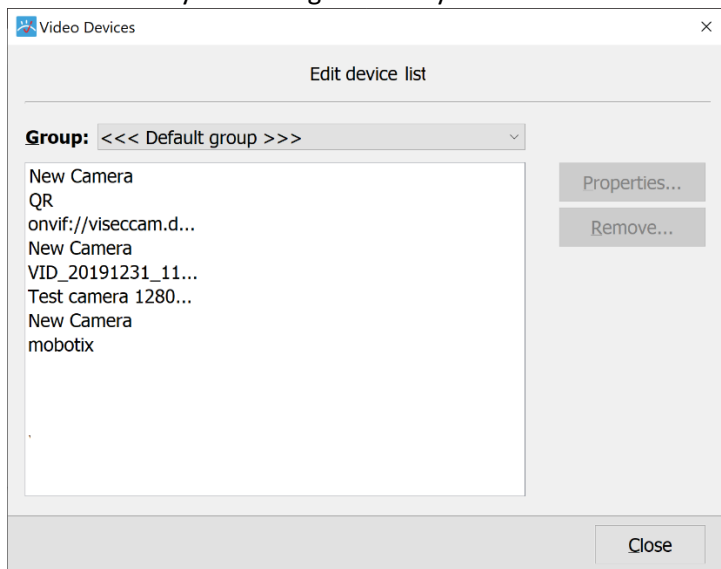
## Camera recording – License Plate -Cloud Compatible

camera. You will see a moving image, such as:



### Editing Existing Cameras – Settings – Control Panel – Cameras

This will show you existing cameras you added.



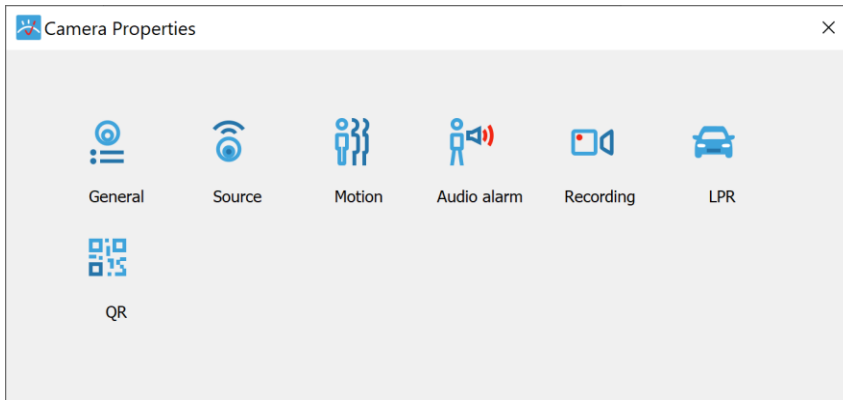
**Select a camera, and press properties**



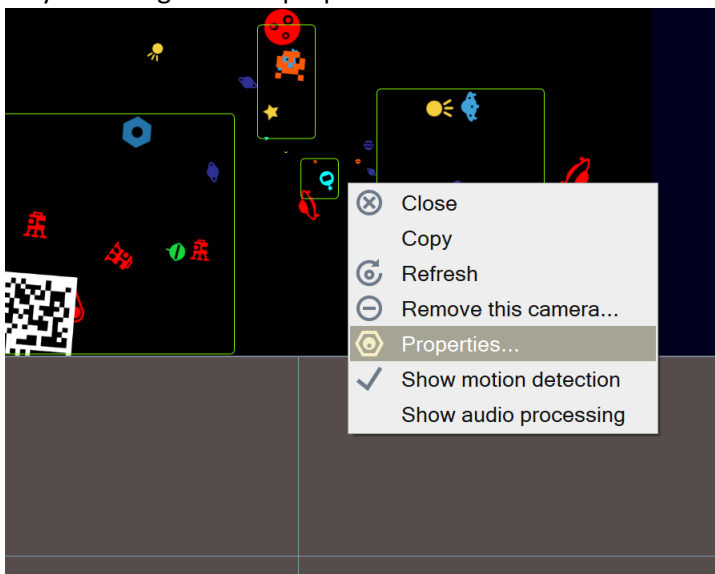
# Visec Online Software Manual

## Camera recording – License Plate -Cloud Compatible

- Camera Properties



Or you can right click – properties on camera live

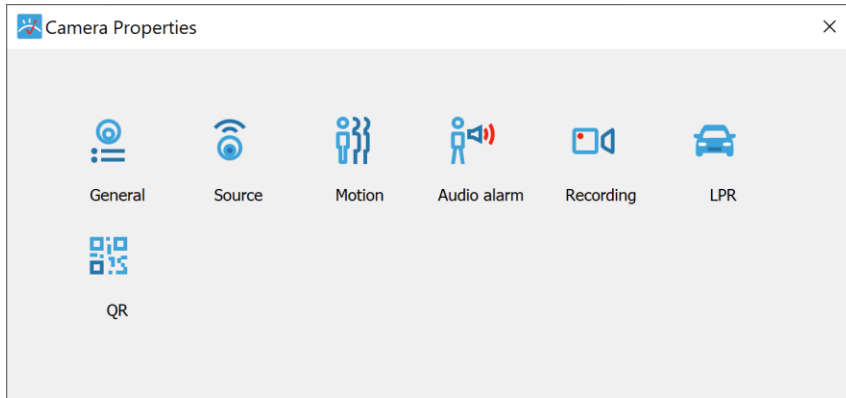




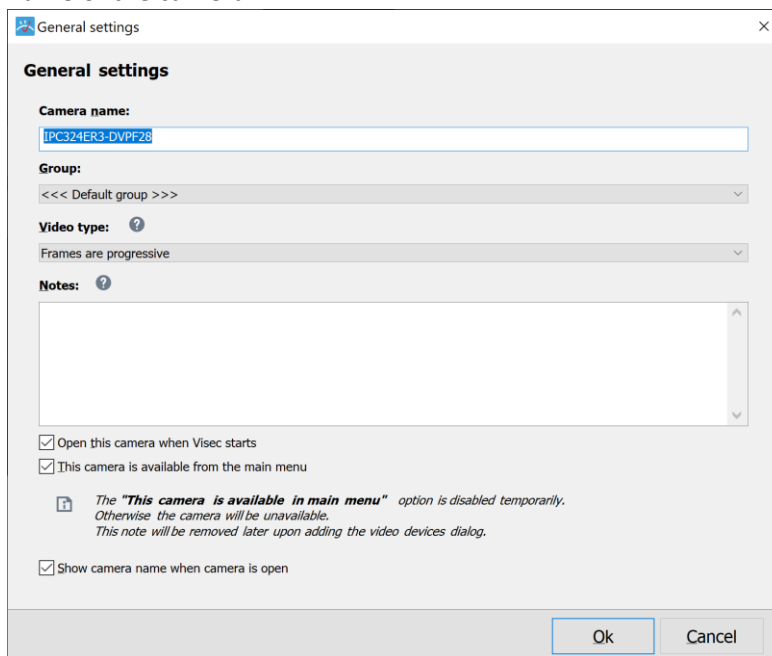
# Visec Online Software Manual

## Camera recording – License Plate -Cloud Compatible

### Camera Properties



- [General Camera properties](#) – this will show you the name, a group that you can name and assign to. The Video Type (in case you run an old interlace camera), some notes you can enter here (like a quick note or comment), and last there are options to choose when Visec Starts. For example, to load this camera and make it active when Visec opens, and show the name of the camera.

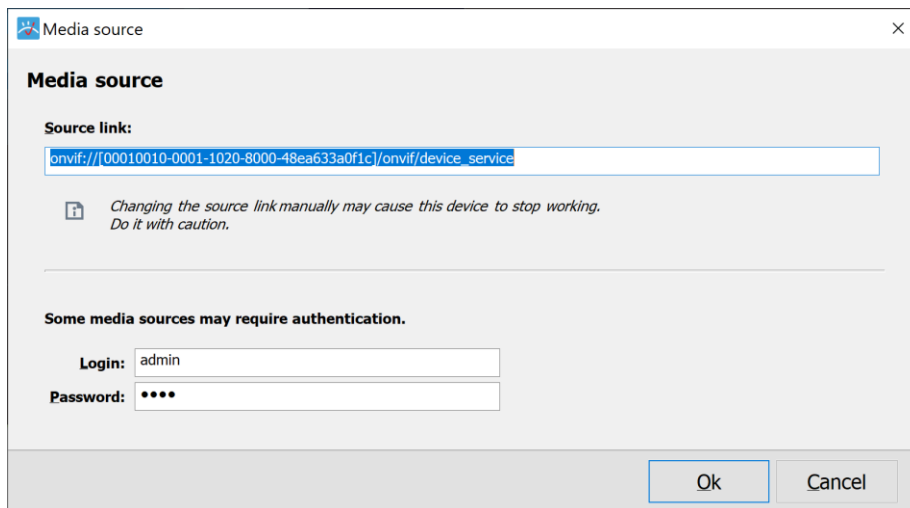




# Visec Online Software Manual

## Camera recording – License Plate -Cloud Compatible

---



- [Editing the Camera Source](#) – Under the Control Panel – Camera – Properties - Source (or right click -camera –properties source), you can see the source Visec uses for the camera, as well as the Login and Password. Note the password will always shows \*\*\*\* or 4 characters even if the password is longer. We do not show the actual length for security and only display 4 characters.

You can edit the source link and password.

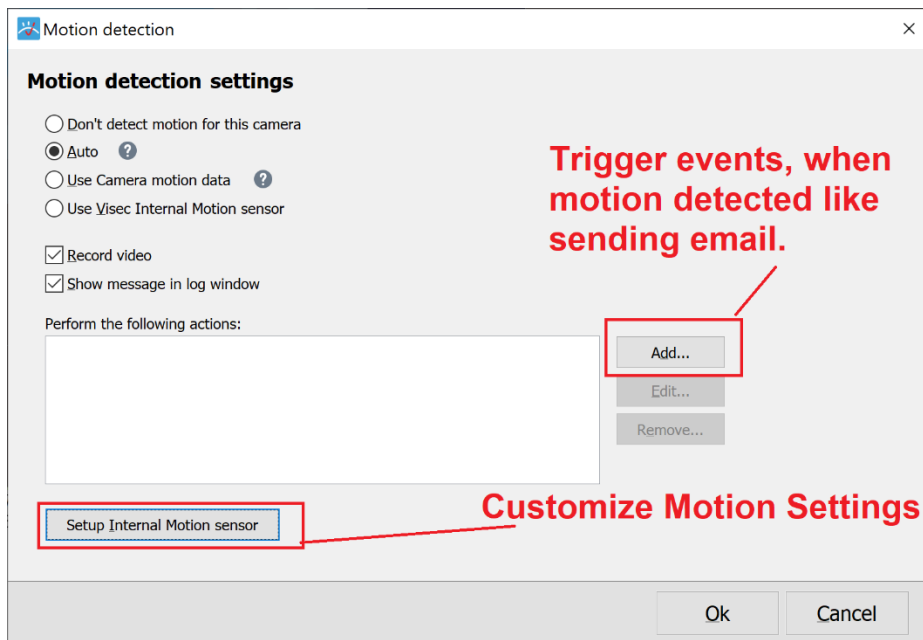
Note: the source link is usually automatically found, so caution on editing this unless you know specifically what you are editing.

- [Editing the Camera Motion Settings](#) - Under the Control Panel – Camera – Properties – Motion (or right click -camera –properties Motion), you can edit settings for motion. By default, Visec uses a proprietary based motion algorithm where it adapts based on the camera’s activity. You can adjust settings byb pressinh the button



# Visec Online Software Manual

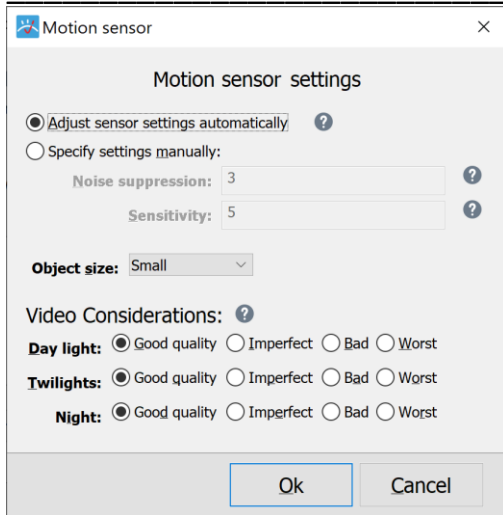
## Camera recording – License Plate -Cloud Compatible



- [Customize Motion Settings](#) – pressing the Setup Internal Motion sensor button will allow your customize settings as shown below

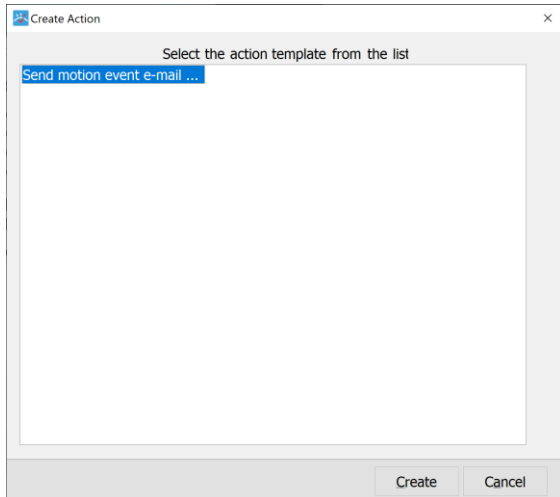
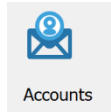
# Visec Online Software Manual

## Camera recording – License Plate -Cloud Compatible



### Motion Detection Events -like Sending Email when motion detected

press the add button in the motion settings area will allow you to setup events based on motion. E.g. motion detected. Note you need to first setup an email account in the Settings – Control Panel – Accounts

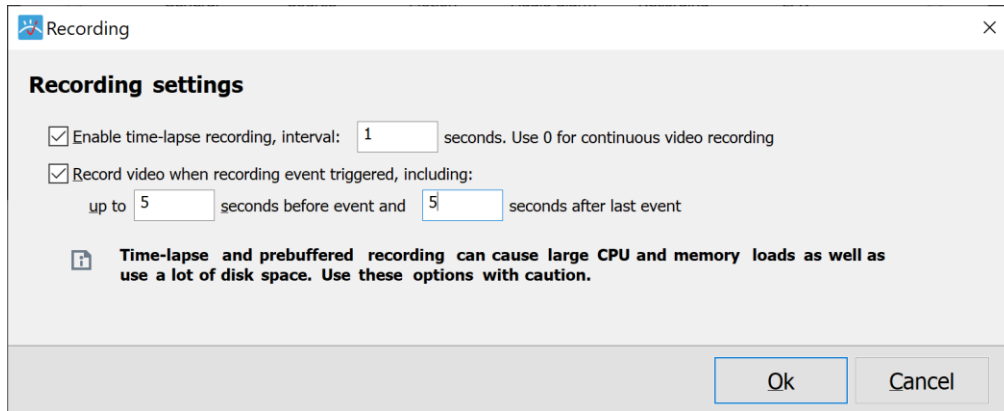




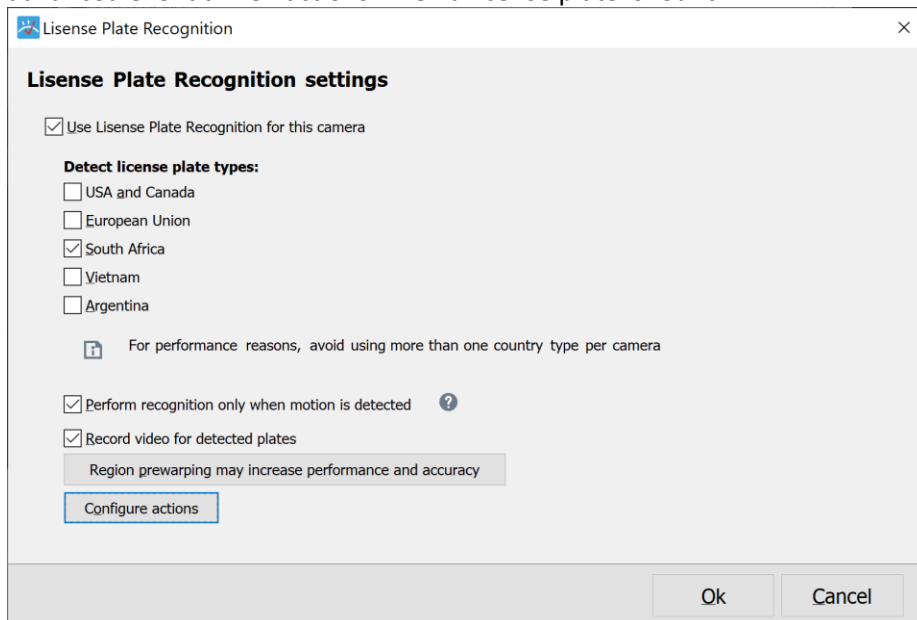
# Visec Online Software Manual

## Camera recording – License Plate -Cloud Compatible

[Customize Camera Recording Settings](#) - Under the Control Panel – Camera – Properties – Recording (or right click -camera –properties Recording), Camera recording can be configured for all video, incremental (e.g. 1 frame a second) as well as full video when motion occurs, both before and after.



[License Plate Recognition Settings LPR](#) - Under the Control Panel – Camera – Properties – LPR (or right click -camera –properties LPR), you can configure license plate recording, as well as advanced event driven actions when a license plate is found.

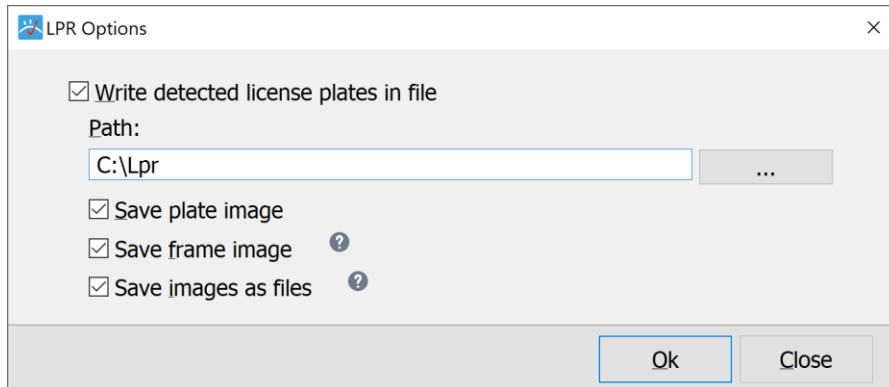




# Visec Online Software Manual

## Camera recording – License Plate -Cloud Compatible

- [Manage LPR settings](#) -Note you also under the Control Panel – Camera – Groups (or right click -camera –properties - LPR) for specific settings. These settings allow for the logging of data, options to save LPR plate images, frame images, and the file formats to save.



- [Managing LPR Database](#) – Under the Control Panel – Camera – Database (or right click -camera –properties – Database), You can manage a local database of license plates. You can add many fields such as:



# Visec Online Software Manual

## Camera recording – License Plate -Cloud Compatible

Database record

Add or edit database record

License plate:

Owner:

Address:

Phone:

E-Mail:

Extra e-mail:

SMS e-mail:

Status:

Make:

Model:

Color:

Year:

Crime type:

Date listed:

Instructions:

Notes:

Replace record if it already exists

Ok Close

[QR code Settings](#) - Under the Control Panel – Camera – Properties – QR (or right click -camera – properties QR), you can configure Visec to read QR codes from a video camera.

QR detection

QR detection settings

Detect QR codes for this camera

Do detection only when motion detected

Use double precision scan (slower)

Ok Cancel

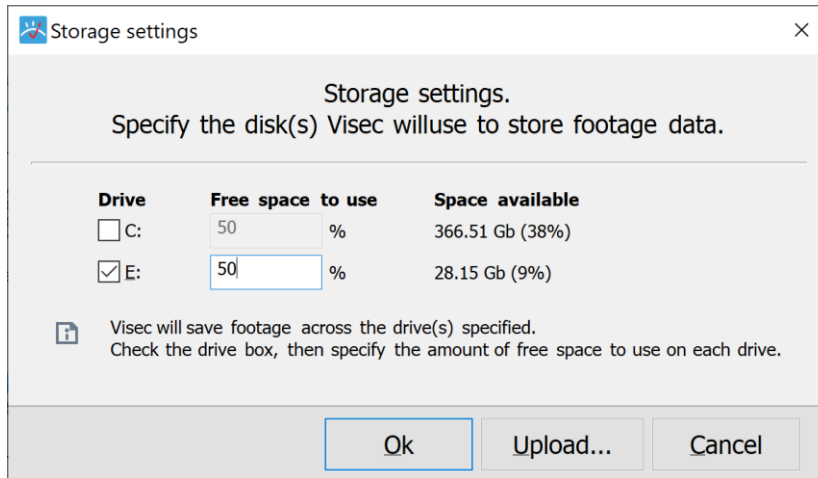




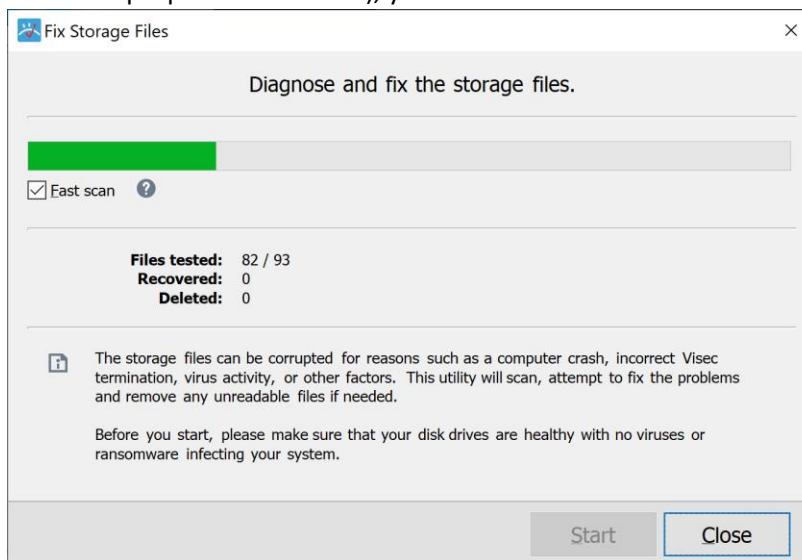
# Visec Online Software Manual

## Camera recording – License Plate -Cloud Compatible

**Storage** -Under the Control Panel – Camera – Properties – Storage (or right click -camera –properties - Storage), you can manage how Visec saves data. Visec can automatically manage storage across multiple drives.



**Fixing Data Corruption** -Under the Control Panel – Camera – Properties – Fix Files (or right click -camera –properties - Fix Files), you can allow Visec to scan for corrupt files and attempt a repair.



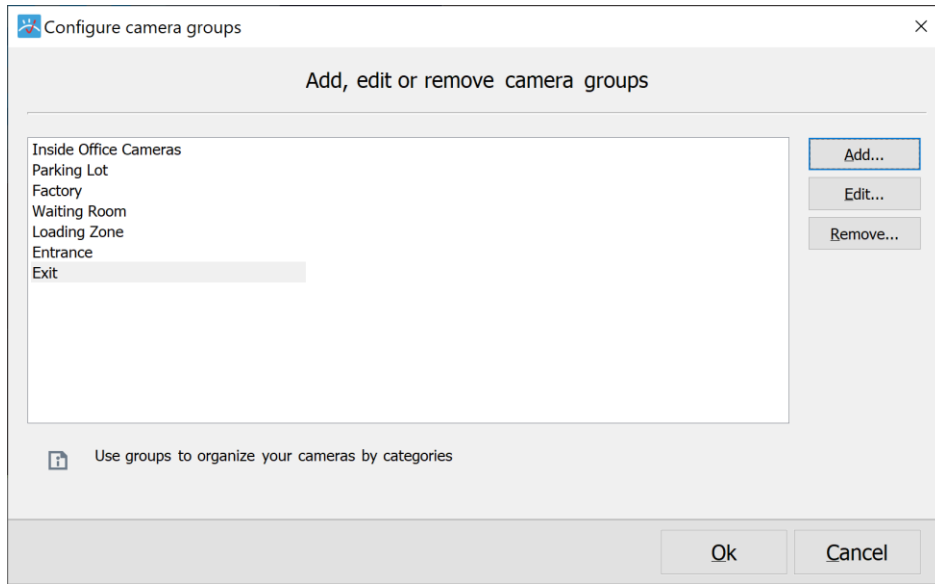
**Organizing Cameras in groups** -Under the Control Panel – Camera – Groups (or right click -camera –properties - Groups), you can manage group names that you can assign cameras. This allows



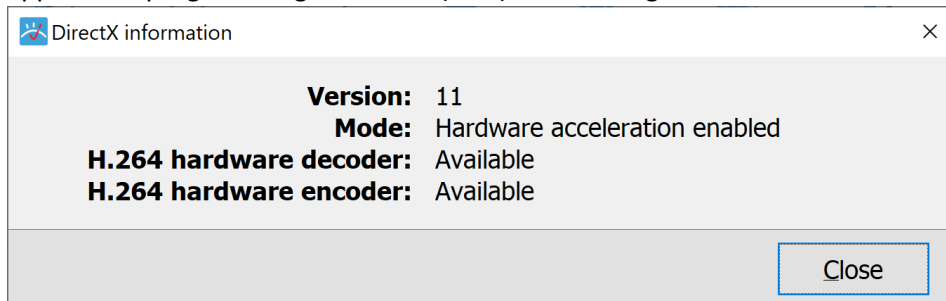
# Visec Online Software Manual

## Camera recording – License Plate -Cloud Compatible

easier access to know specific locations of cameras.



[DirectX test](#) -Under the Control Panel – Camera – DirectX (or right click -camera –properties - DirectX), you can check to make sure your computer supports DirectX, (a Microsoft DirectX software application programming interfaces (APIs) for handling tasks related to multimedia)

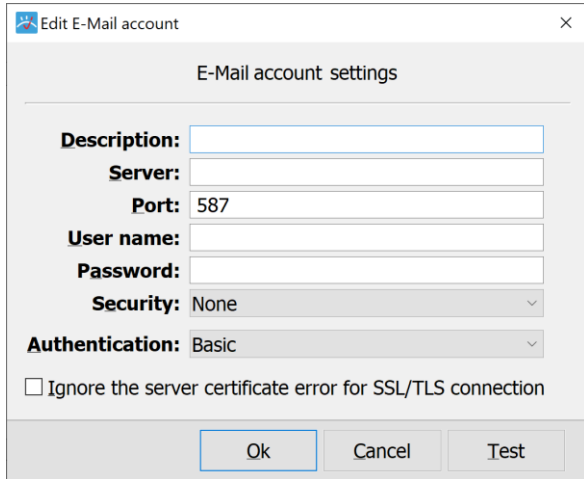


[Setting Up outgoing Email](#) - Under the Control Panel – Camera – Accounts (or right click - camera –properties – Accounts), You can add an email account used for sending alerts. Visec Supports standard outgoing email settings.

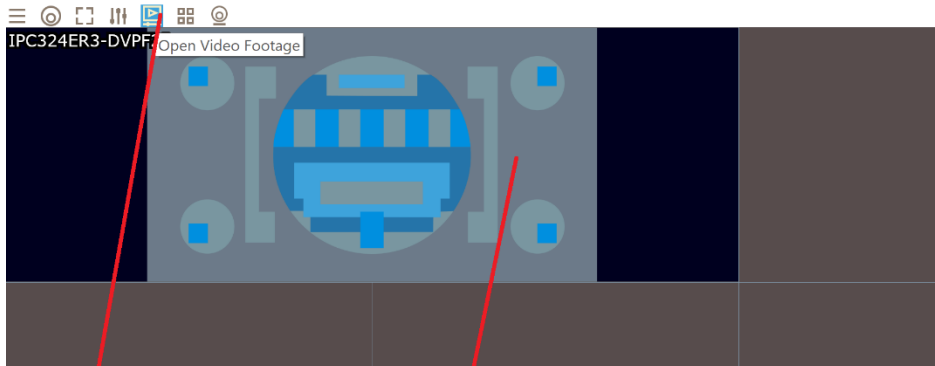


# Visec Online Software Manual

## Camera recording – License Plate -Cloud Compatible



**How to Playback Video Footage** - to playback recorded video either press the Open Video Footage button, or double click the camera widow. Double clicking will instantly playback video. You can also export video, such as the entire clip, or sections as needed.



**Playback Video**  
**or double click camera**

**Technical Support** – Questions or comments, please complete our tech support form here

Visec.com – Contact Us.

<https://www.visec.com/index.php?route=information/contact>