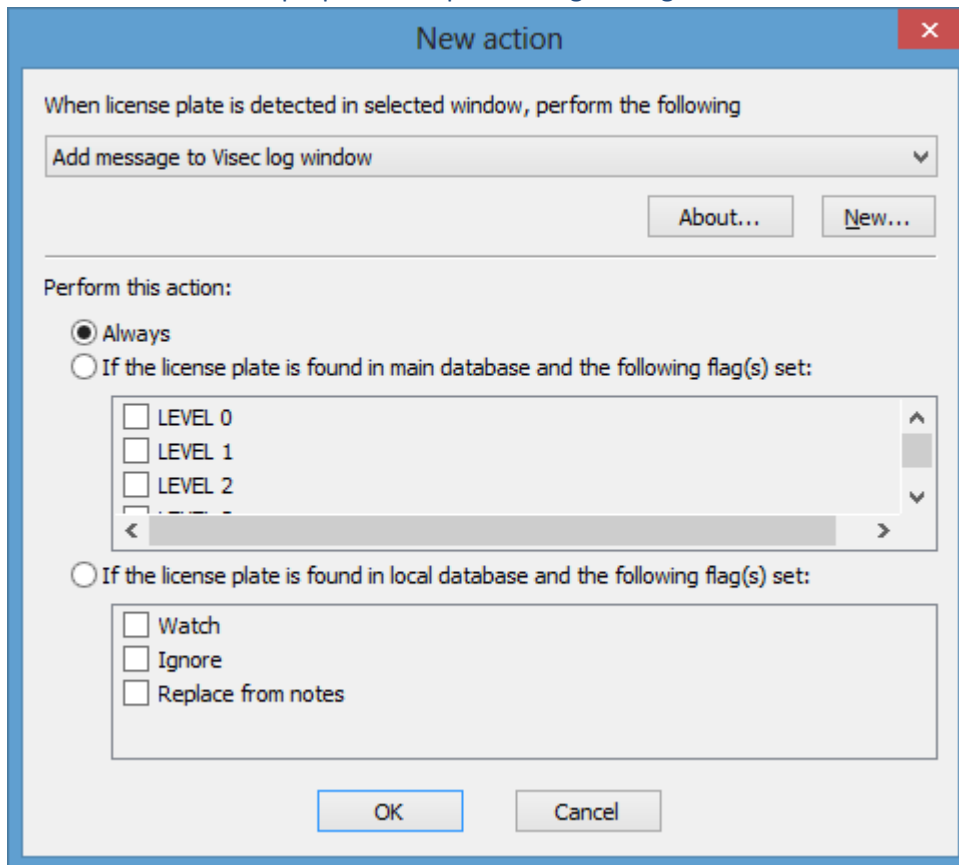


# 1) Identify the plates and store in database.

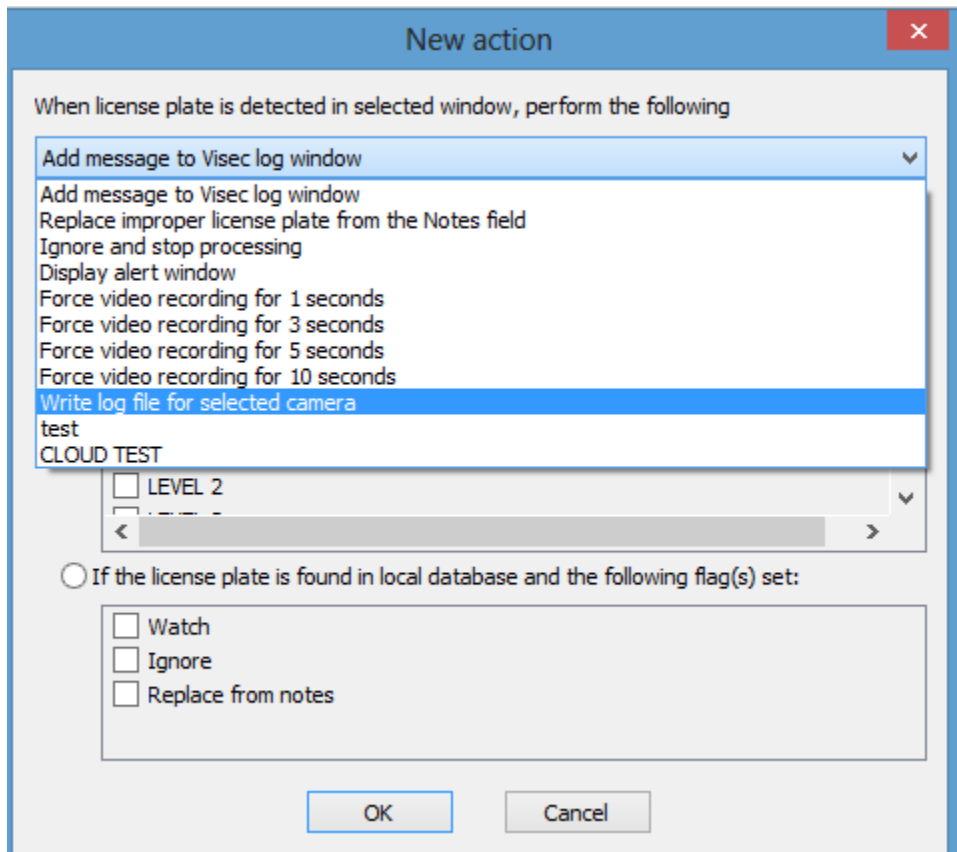
Current Visec uses proprietary database.

## a) How to store all plates

View Video Devices → properties → Lpr → Configure Regions & Events → Add

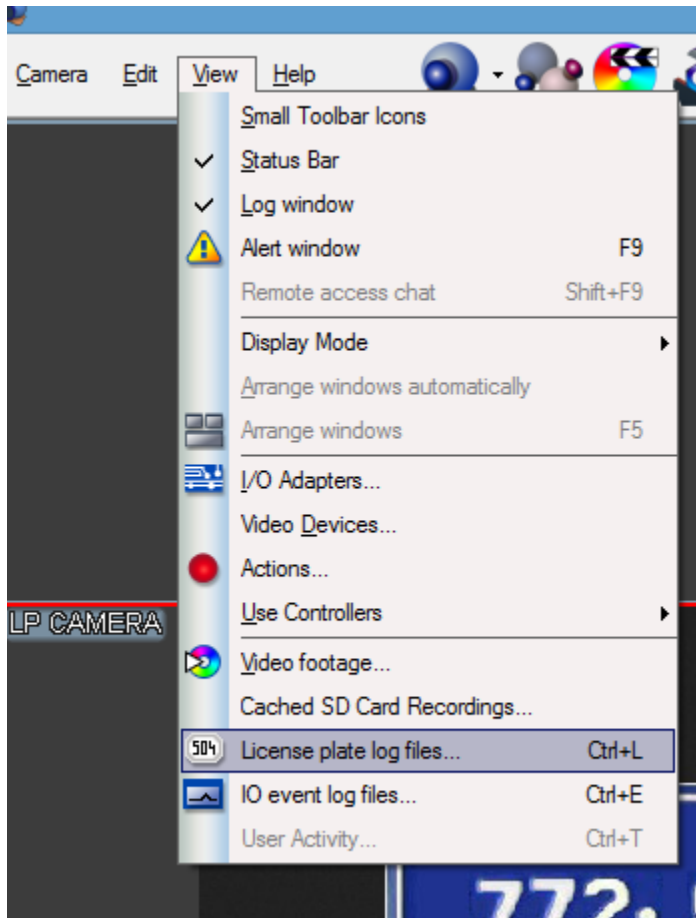


Then in drop down choose



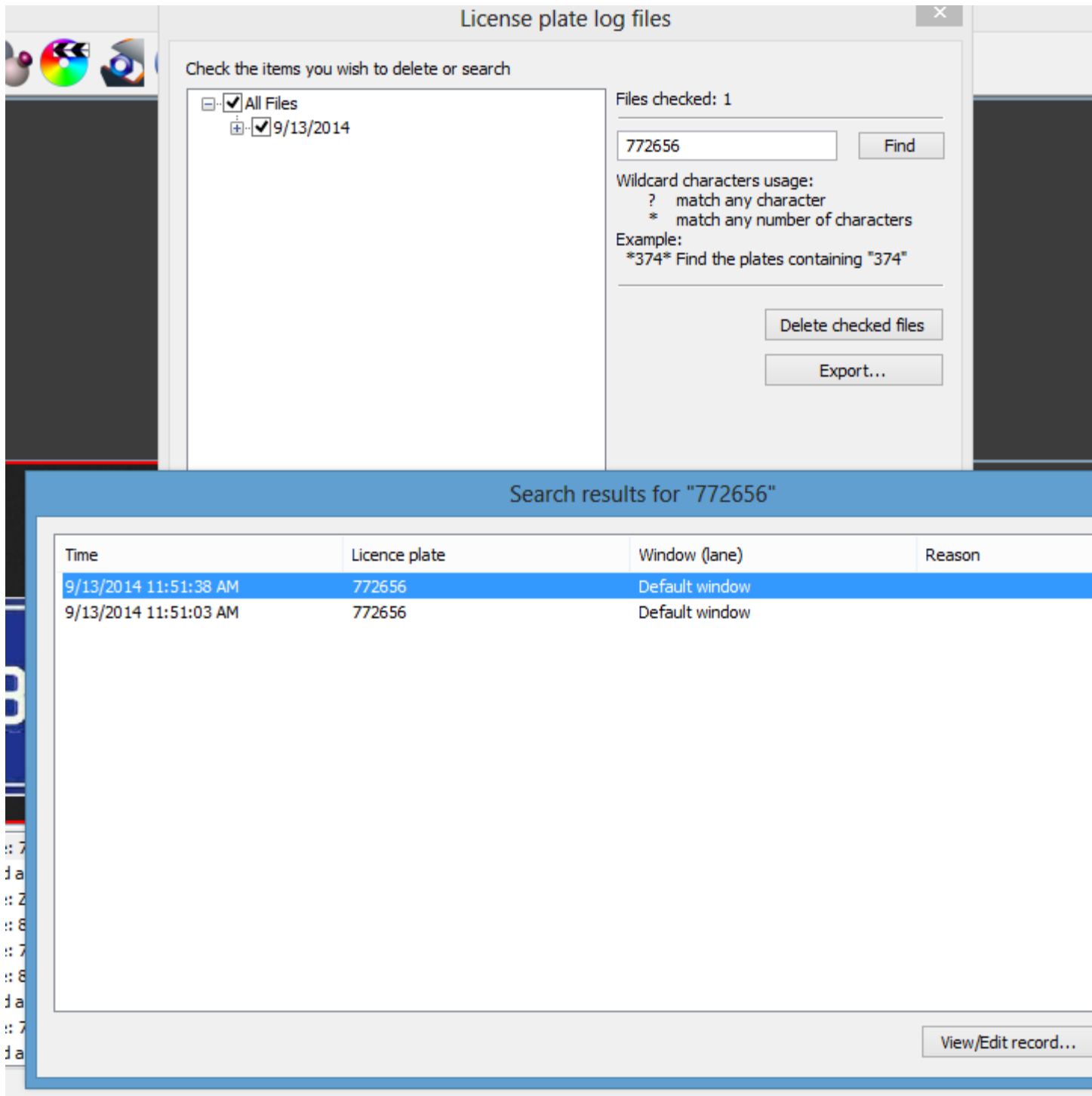
Choose Write log for selected camera

Then you can see a log and search under: View → License plate log

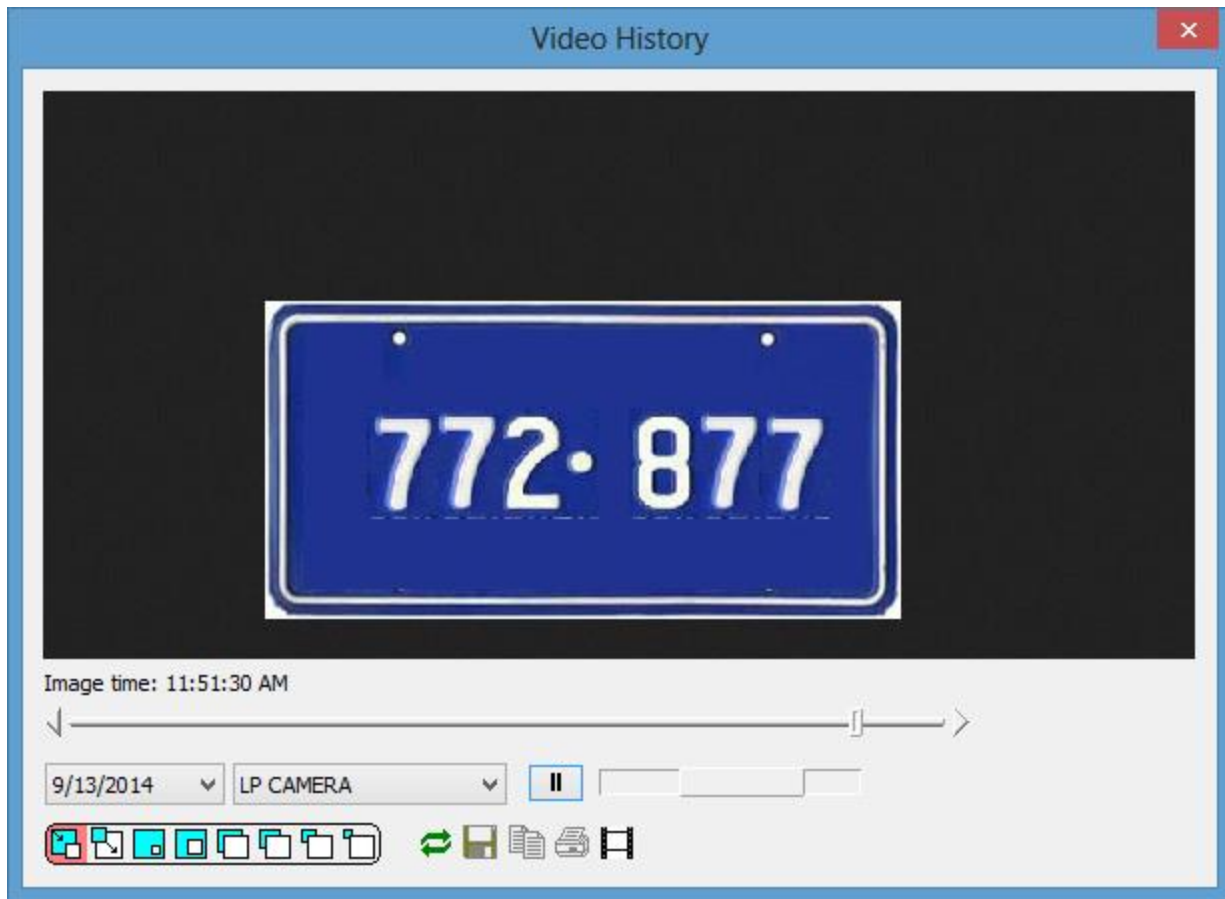


## SEARCHING

e.g.



You can double click the plate and it will playback when the reading was done



## 2) How to Post to a 3<sup>rd</sup> part system

Visec allows integration in 2 ways

- 1) The simplest way is for visec to save all readings in a text file and folder.  
A 3<sup>rd</sup> party software or script can then read this text file and update it
- 2) **More API System via http post**
  - a. Visec can communicate with a 3<sup>rd</sup> party system post using an HTTP post.
    - i. Anytime a license plate is read Visec can post (or send) to a 3<sup>rd</sup> party system over the internet (or via lan)

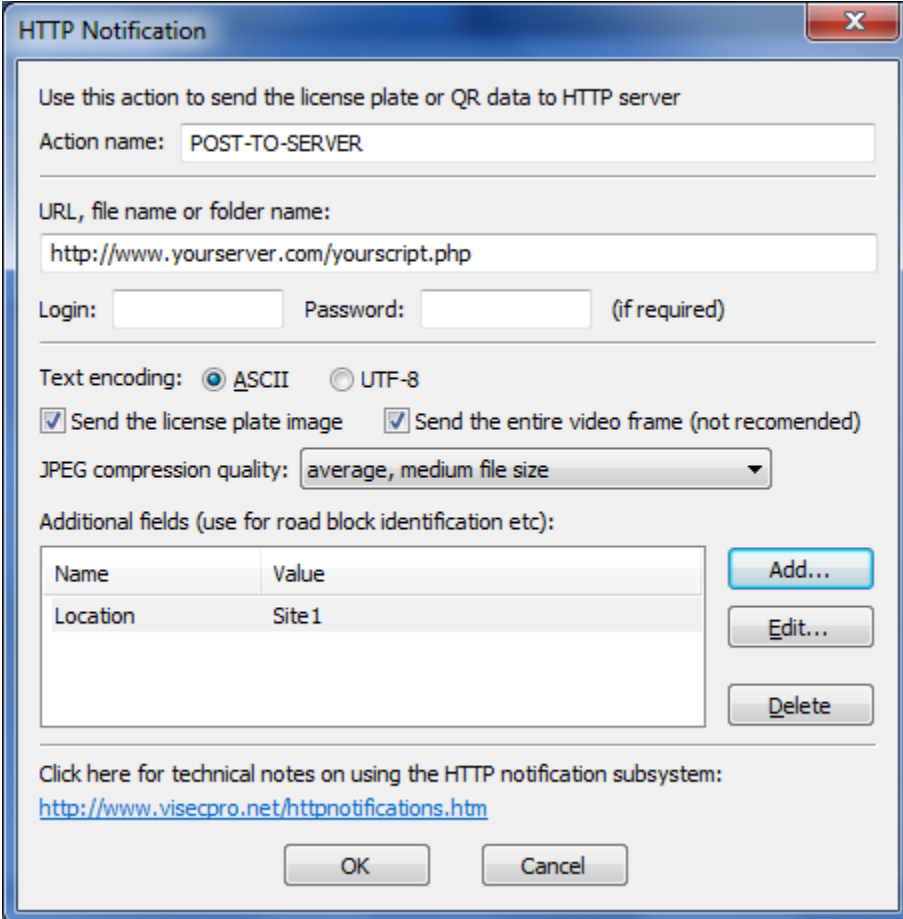
The reason to post to a 3<sup>rd</sup> party script is so you can take the data and do what is required with it

- ii. For example let's suppose to you want to Integrate your VMS system with Visec as the LPR engine. You could have Visec work as the LPR engine sending readings to your own VMS software.

Your VMS software could then receive all license plates, their corresponding data, and key fields. From here your VMS can then take this data and process it.

This is done as follows from VISEC LPR MENU

- a) Right click the camera
  - b) choose properties
  - c) configure regions and events
  - d) under events and actions box, press: ADD
- 3) PRESS NEW
- 4) choose DATA DUMP or HTTP notification



The screenshot shows the 'HTTP Notification' dialog box. It contains the following fields and options:

- Action name:** POST-TO-SERVER
- URL, file name or folder name:** http://www.yourserver.com/yourscript.php
- Login:** [ ] **Password:** [ ] (if required)
- Text encoding:**  ASCII  UTF-8
- Send the license plate image  Send the entire video frame (not recommended)
- JPEG compression quality:** average, medium file size
- Additional fields (use for road block identification etc):**

Name	Value
Location	Site1

Buttons: Add... Edit... Delete
- Click here for technical notes on using the HTTP notification subsystem:** <http://www.visecpro.net/httpnotifications.htm>
- Buttons:** OK Cancel

Within the post visec will send the image, and any hidden field's you need.

Visec can also authenticate (login) if needed.

To further allow deeper integration Visec can posts all misc info and user-defined fields as well

These fields can be associated data such as:.

The misc fields are named as:

MISC\_NAME

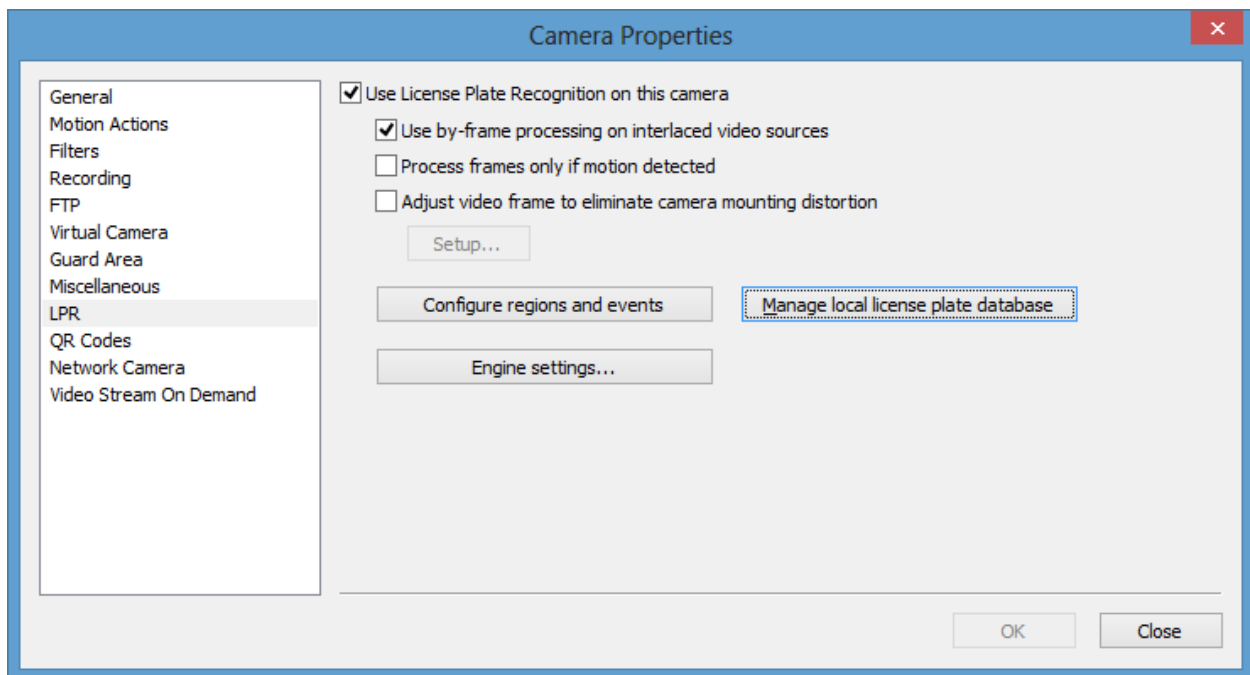
MISC\_ADDR  
MISC\_PHONE  
MISC\_EMAIL  
MISC\_EMAIL1  
MISC\_EMAILSMS  
MISC\_STATUS

User defined fields are also allowed:  
The user-defined fields are prefixed with "FLD\_" string

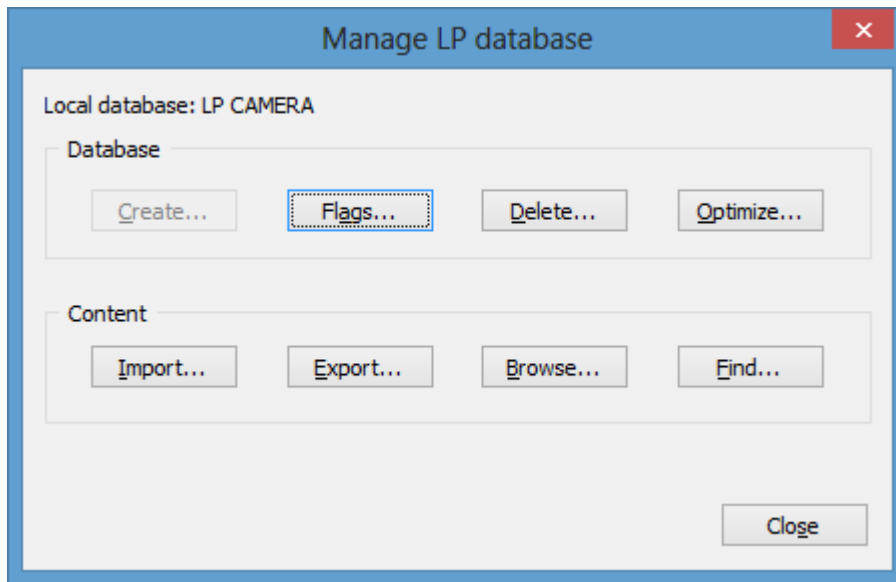
### 3) Create Alert for unidentified plate

a) Right click the camera (or view -> video devices )  
(Or View Video Devices → properties → Lpr

b) Choose manage *local license plate database*



## PRESS BROWSE





**PRESS ADD TO ADD A NEW PLATE**

The 'New record' dialog box contains the following fields and options:

- License plate:** A text input field containing '12345678'.
- Flags:** A group box containing three checkboxes: 'Watch', 'Ignore', and 'Replace from notes', all of which are currently unchecked.
- Misc info:** A table with two columns: 'Field' and 'Value'. The 'Field' column lists: 'Owner Name', 'Address', 'Phone', 'Primary e-mail', 'Extra e-mail', and 'SMS e-mail'. The 'Value' column is empty.
- Status:** A dropdown menu.
- Notes:** A large text area with scrollbars.
- Buttons:** 'Add', 'Delete', and 'Cancel' buttons are located at the bottom of the dialog.

**PRESS ADD WHEN DONE**

The 'New action' dialog box is configured as follows:

- When license plate is detected in selected window, perform the following:** A dropdown menu set to 'Add message to Visec log window'.
- Perform this action:** Three radio button options:
  - Always
  - If the license plate is found in main database and the following flag(s) set:
    - LEVEL 0
    - LEVEL 1
    - LEVEL 2
  - If the license plate is found in local database and the following flag(s) set:
    - Watch
    - Ignore
    - Replace from notes

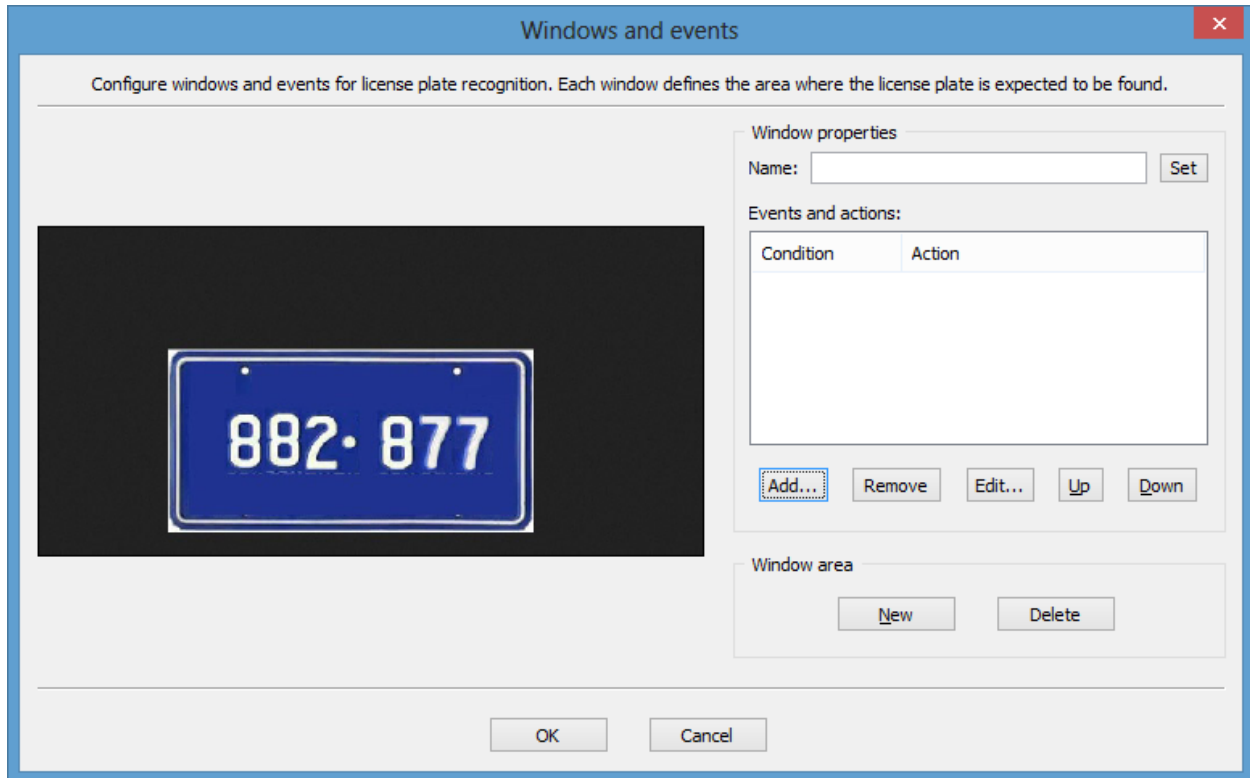
If you choose **always** - anytime a plate is found something happen  
e.g. show, alert window, post to server api, email alert, open gate)

If you choose **this box** - an action will only happen when a plate from the database is found

e.g. if plate 123456 was found a gate will open.  
If not found no gate will open. (or not alert window, post to server api, email alert

## How to display alerts

Go back: View Video Devices → properties → Lpr

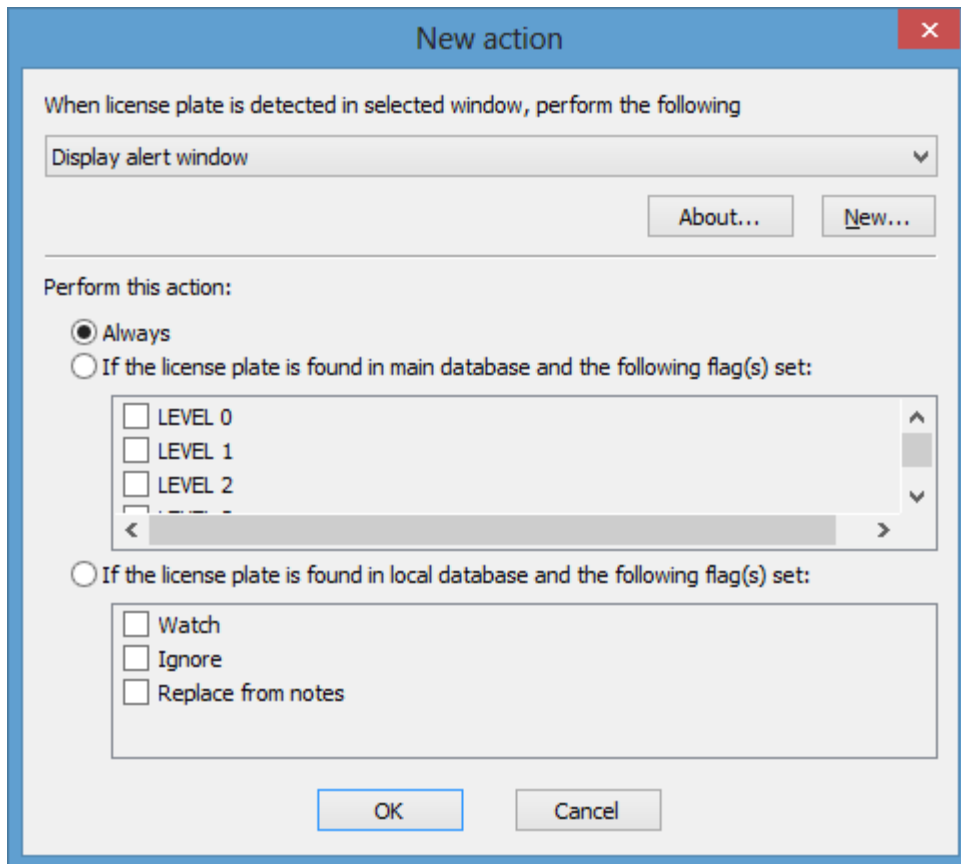


## HOW TO ADD ALERT WINDOWS, SEND EMAIL ALERTS, OPEN GATES

View Video Devices → properties → Lpr

Press Add

And then choose "DISPLAY ALERT WINDOW)



If you choose always, any plate will show alert window

If you choose other option will only show when matching plate found from database

### **Sending Email Alerts**

View Video Devices → properties → Lpr

Press Add

And then choose "Send a car owner email notification or send lpr email notification)

