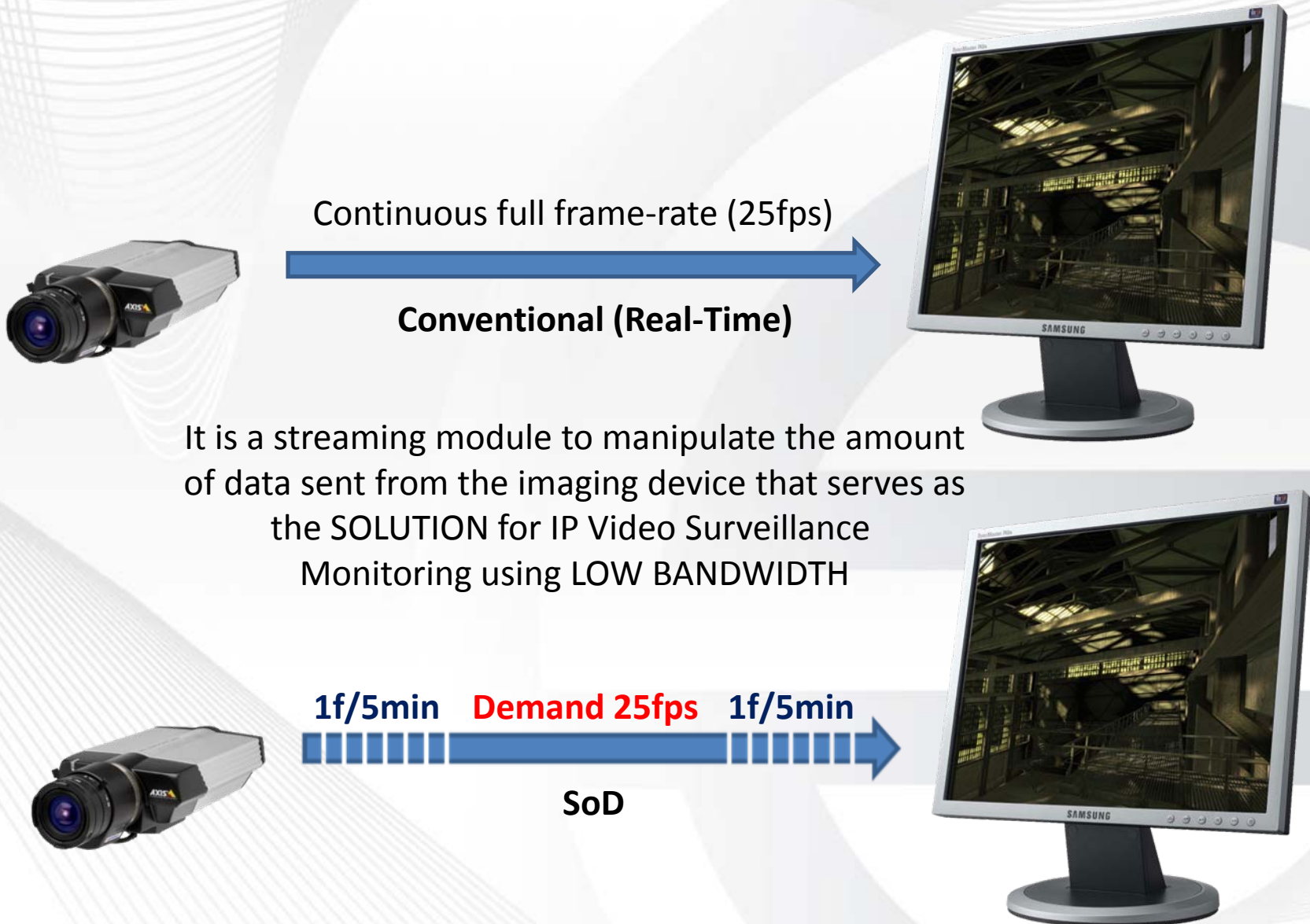




**STREAMING ON DEMAND**

# WHAT is SoD (Streaming on Demand)?



# Another Advantage



Continuous full frame-rate (25fps)



**Conventional (Real-Time)**



**STORAGE  
DATABASE**

Not only does the SoD module save on BANDWIDTH, it also saves on total STORAGE costs.



1f/5min **Demand 25fps** 1f/5min



**SoD**



**STORAGE  
DATABASE**

# Storage Saving Example

SITE A 20 CAMS



SITE A 50 CAMS



SITE A 16 CAMS



SITE A 30 CAMS



SITE A 32 CAMS



TOTAL OF: 148 VGA MPEG4 CAMS

**SoD Solution Requires  
Between 400 & 500GB**

Recording Conditions:  
7 Days Recording, Continuous Feed  
at SoD Settings



**SoD Connection**

1 Frame Every 5min



**Conventional Solution  
Requires 3.5-4TB @ 10FPS**

Recording Conditions:  
7 Days Recording, 50% Motion  
Activity 8hs / day

**Conventional Connection**



10FPS



# **Challenges of EXISTING Monitoring Solutions using LOW BANDWIDTH**



IP Surveillance System  
requires Live Video Stream

MJPEG Images received via  
alarm/event only

Requires High Bandwidth  
Throughput

High Data Usage

# ADVANTAGES of SoD Module



Utilize limited BANDWIDTH more effectively

Utilize limited DATA more effectively

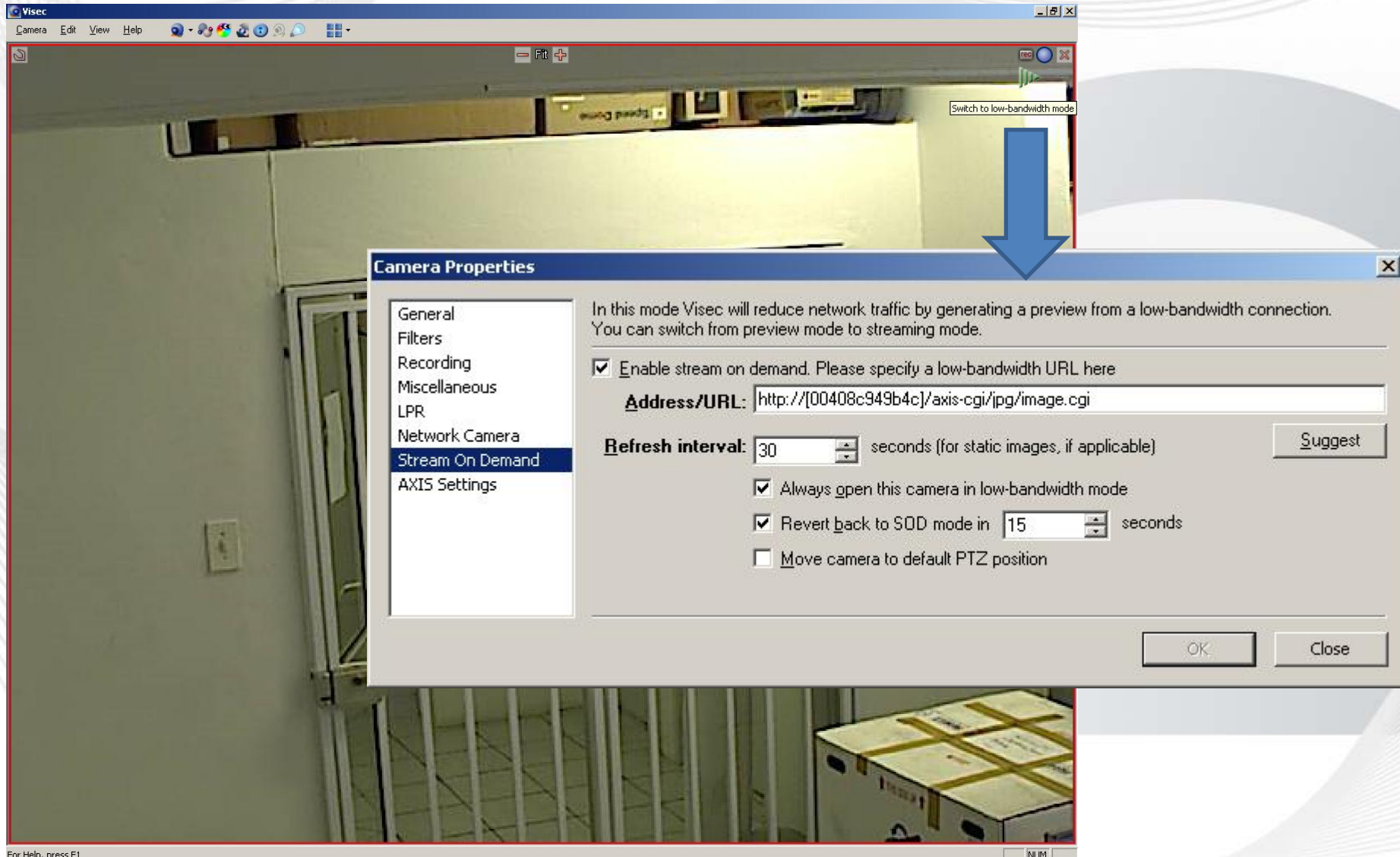
Receive IMAGES at various INTERVALS instead of Live Video Stream

Stream LIVE video on DEMAND

SINGLE Playback interface for MJPEG Images and Stored Video

Auto TIMEOUT on Live Video Stream

# SoD Setup Example







A World First!!!

# On-Board Storage Access



Playback

Visec SoD is the FIRST 3<sup>rd</sup> Party utility that allows remote playback  
DIRECTLY off the SD card on the Video Streaming Device.



# WHERE is SoD Applicable?

Streaming on Demand (SoD) should be introduced and sold as a SOLUTION for System Integrators where BANDWIDTH usage is of importance. Mainly aimed at 3G / GSM networks or Large Scale WAN connections.

An example of where the SoD module would apply is in a Control Room environment where they want to monitor a large number of Video Feeds. Each feed will “update” at the time interval that was setup and when action is necessary, they can stream Live continuous feeds from the active cameras.

User logs are kept to monitor the “Live Stream” usage and prevention methods are put in place in case the guard forgot to go back to the “Low Bandwidth” mode. Not only can it automatically revert back at a set time frame, it can also revert to a “Home” position of a PTZ, Speed Dome or High Speed Positioning System.

# System Limitations



Currently, the SoD is only applicable to cameras and encoders. The “Platinum Pus” module is also not included which covers the Moxa I/O capabilities.

***Thank You!***